

# OUR 4 PILLAR APPROACH

IMPACT REPORT 2023

GRANITE EDUCATION FOUNDATION



# TABLE OF CONTENTS

|    |   |   |
|----|---|---|
| pg | 1 | Table of Contents                                 |
|    | 2 | Letter from Board Chair & CEO                     |
|    | 3 | Granite Education Foundation Pillars              |
|    |   | 3.1 ACCESS TO OPPORTUNITY                         |
|    |   | 3.2 EDUCATOR SUPPORT                              |
|    |   | 3.2a EDUCATOR SUPPORT - Teacher Appreciation Fair |
|    |   | 3.2b EDUCATOR SUPPORT - Excel Educator Awards     |
|    |   | 3.3 FOOD ASSISTANCE                               |
|    |   | 3.3a FOOD ASSISTANCE - 9/11 Day of Service        |
|    |   | 3.4 STUDENT AID                                   |
|    |   | 3.4a STUDENT AID - Santa Sacks & Shop-a-Thon      |
|    | 4 | 2022-2023 Granite School District Facts           |
|    | 5 | GEF Mission & Board of Directors                  |
|    | 6 | Financials  |
|    | 7 | Donor Spotlights: Thank You                       |
|    | 8 | Contact   |

# LETTER FROM BOARD CHAIR & CEO

Dear Friends,

Since 1988, the Granite Education Foundation has been committed to advocating for and supporting the students and teachers in the Granite School District. We are excited to highlight the work that was done last year and also eager to look ahead and explore additional ways we can support students and teachers in Granite.

With your incredible support, we were able to once again provide 166,968 meals to students in need. Together, we fulfilled nearly 40,043 student aid requests, and honored 10 amazing educators with the prestigious Excel Awards.

Our desire here at the Foundation has been to become more intentional in our work while maintaining a direct connection with our roots. We believe we have done that in the design of our new 4 Pillar Approach. Our mission is to reduce learning barriers for students and teachers as well as increase access to opportunities. These pillars connect our programming with the needs we continue to see.

1. Access to Opportunity
2. Food Assistance
3. Student Aid
4. Educator Support and Recognition

Our board and staff are as committed as ever to continue to work to ensure all students and teachers in Granite have the supplies and opportunities they need to maximize their learning and teaching potential!

None of our work is possible without the incredible generosity of our supporters. The support YOU provide the Foundation makes all the difference. Thank you to our partners, board members, volunteers, and staff. You all make the difference in the lives of the students and teachers in Granite!



A handwritten signature in black ink that reads "Carrie Johnson".

**CARRIE JOHNSON**  
Board Chair



A handwritten signature in black ink that reads "Jadee Talbot".

**JADEE TALBOT**  
Chief Executive Officer

# GRANITE EDUCATION FOUNDATION PILLARS:

*"Reducing barriers to learning - Increasing access to opportunities"*



## Access to Opportunity

- scholarships
- bus passes
- college fees
- student recognition



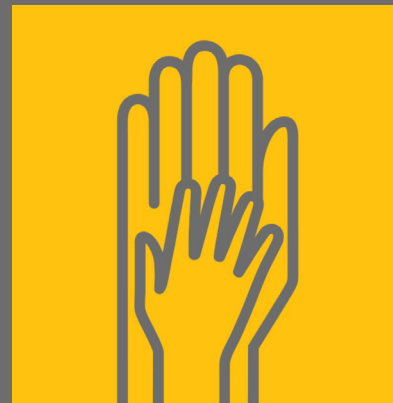
## Educator Support

- educator recognition and support
- teacher appreciation fair
- educator awards



## Food Assistance

- student weekend kits
- school snack pickups
- emergency food boxes



## Student Aid

- backpacks & supplies
- santa sacks
- vision vouchers
- clothing, hygiene, & infant supplies



# PILLAR: ACCESS TO OPPORTUNITY



## Access to Opportunity

- scholarships
- bus passes
- college fees
- student recognition

Access to Opportunity focuses on programs that further students' education, provide support in school attendance and improvement, and inspire students to be the best they can be. The Granite Education Foundation works closely with Granite School District's College and Career Readiness department to determine need and to coordinate programs.

This pillar's impact includes the following:

- \$105,000 in scholarships to 51 students.
- 1,381 bus passes totaling 22,813 bus rides to student destinations.
- \$2,910 paid in college application fees for 86 students.
- \$2,880 in fees and donated sleeping bags to send 120 students to Snow College's SnowBlast.
- \$3,900 in gifts and gift cards to 8 runner-up students and 1 Absolutely Incredible Student.

College Visits



Recognitions



Scholarships





# PILLAR: EDUCATOR SUPPORT



## Educator Support

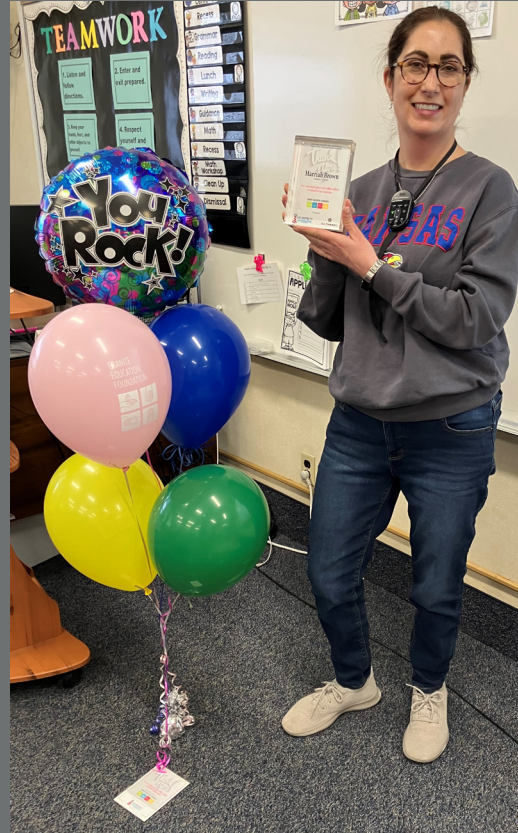
- educator recognition and support
- teacher appreciation fair
- educator awards

Educator Support focuses on programs that support educators in Granite School District; including teachers, social workers, counselors, nurses, administrators, etc. Understanding the impact a single educator can have on a student, we work to create an environment where educators feel supported and recognized.

This pillar's impact includes the following:

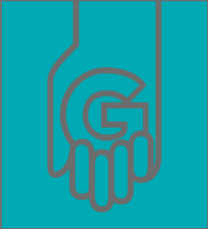
- \$10,000 in Excel awards to 10 outstanding educators.
- 31 inspiring educators & 9 schools in our weekly Thank You Thursday program.
- 72 pallets of items, 45 prizes, & two classroom makeovers given at our Teacher Appreciation Fair for 350 educators.

Collaborating with Granite School District administrators, peers, students, & community members, we identify & recognize educators who are making a difference every day.





# PILLAR: EDUCATOR SUPPORT - TEACHER APPRECIATION FAIR



**TEACHER APPRECIATION FAIR:**  
Pillar Support Event

Title Sponsor:



The first annual Teacher Appreciation Fair (TAF) was created to celebrate, support and recognize teachers for their hard work.

The TAF is a collaborative effort to connect businesses, community organizations, and educators in one place while providing a fun and exciting atmosphere.

Throughout the year, as donations are collected from the community and businesses to support our overall mission, any donations over program needs are then used in the annual "Teacher Sweep", a garage-sale style event where Granite educators select items for their classrooms, their schools, and their homes.

The event includes teacher giveaways, food trucks, Teacher Sweep, vendors with teacher discounts, and donors to show educators how much we appreciate their service.

This year, we gave away TWO, \$1,000 Grand Prizes and 45 other prizes to educators in the Granite School District.

Event Sponsors:





3.2b

# PILLAR: EDUCATOR SUPPORT - EXCEL EDUCATOR AWARDS



## EXCEL AWARD WINNERS

2022-2023



TITLE SPONSOR



Carter Woolf  
WEST LAKE STEM JR. HIGH

Nicole McCrea  
NEIL ARMSTRONG ACADEMY

Kjersti Parkes  
HUNTER HIGH SCHOOL

Jordan Johnson  
WHITTIER ELEMENTARY

Jill Sundberg  
CHURCHILL JR. HIGH

McKenzie Jackson  
LINCOLN ELEMENTARY

Michelle La-Bonnell  
ACADEMY PARK ELEMENTARY

Shelly Johnson  
ORCHARD ELEMENTARY

Liz Laguan  
STANSBURY ELEMENTARY

Amber Clayton  
MILCREEK ELEMENTARY

Pillar Support Event

Excel Educator Awards

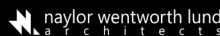
9 Teachers  
1 Admin  
1 Teacher of the Year



ADVOCATE OF EDUCATION



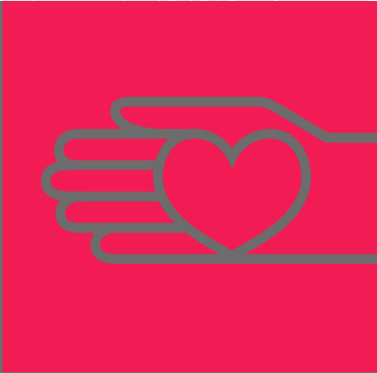
ALLY OF EDUCATION



SUPPORTER OF EDUCATION



# PILLAR: FOOD ASSISTANCE



## Food Assistance

- snack kits
- pantry assistance
- emergency food boxes
- weekend meal kits

Food Assistance focuses on programs that provide needed consumable resources for the students of the Granite School District who are in the greatest need. Working to curb hunger on the weekends and in the classrooms, we collaborate with administrators & social workers determining student & family resource needs.

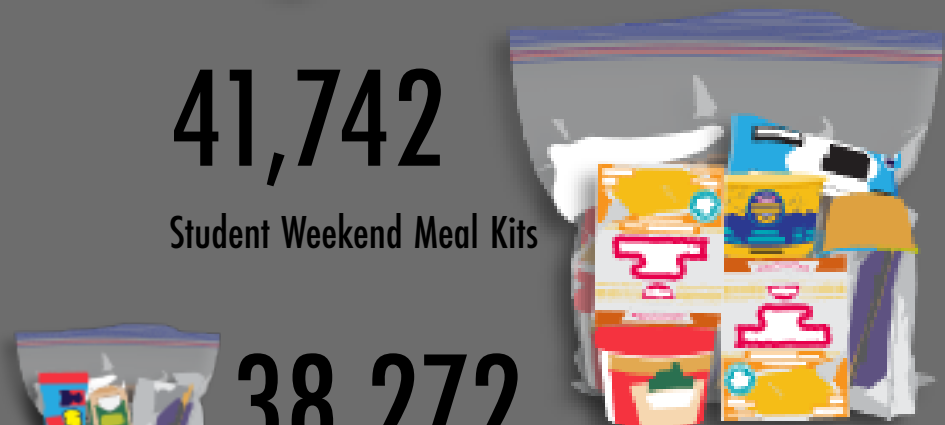
This pillar's impact includes the following:

- 38,272 Snack Kits
- 3,307 student & 974 family visits to student pantries
- 157 emergency food kits delivered
- 41,742 Student Weekend Meal Kits distributed

Focus groups & monthly communication help to refine and improve programs throughout the year.



**157**  
Emergency  
Food Kits



**41,742**  
Student Weekend Meal Kits



**38,272**  
Snack Kits



3.3a

# PILLAR: FOOD ASSISTANCE - 9/11 DAY OF SERVICE



## 9/11 DAY OF SERVICE: Pillar Support Event

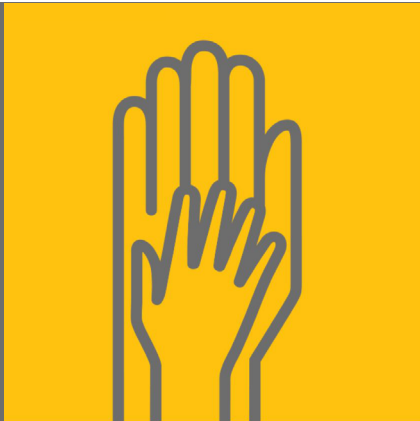
The 9/11 Day of Service & Remembrance is a federally-recognized day of unity, service & shared humanity. During this Saturday event, Granite Education Foundation hosts over 400 volunteers to assemble 15,000+ Student Weekend Meal Kits for distribution to the students of Granite School District throughout the year.

The Granite Education Foundation partners with sponsors, volunteer groups, community leaders, district officials, and suppliers to bring this event to life.





# PILLAR: STUDENT AID



## Student Aid

- backpacks & supplies
- santa sacks
- vision vouchers
- clothing, hygiene, & infant supplies

Student Aid focuses on programs that provide basic-need resources for students of Granite School District who are in need of support in and around the classroom.

This pillar's impact includes the following:

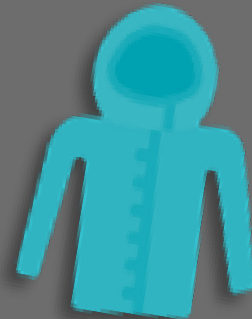
- 40,043 student aid items delivered: including coats, beds, vision vouchers, backpacks with school supplies, hygiene kits, Santa Sacks, and thousands of dollars in Deseret Industries vouchers.

The Granite Education Foundation works directly with over 100 social workers and counselors to identify student needs and to deliver items directly to the school.



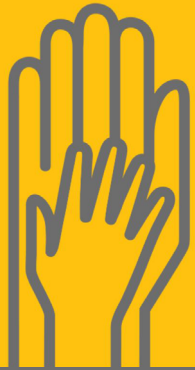
**40,043**  
Student Aid Items

- 1,314 coats
- 114 beds
- 60 vision vouchers
- 16,000 backpacks
- 2,829 hygiene kits
- 6,647 Santa Sacks



3.4a

# PILLAR: STUDENT AID - SANTA SACKS & SHOP-A-THON



## SANTA SACKS ELEM & 6-12: Pillar Support Event

10% of students received holiday aid:

- 5,000 Elementary Santa Sacks
- 1,600 6th - 12th grade Santa Sacks



Pairing basic needs with holiday items, Santa Sacks provide books, hats, toys, blankets, hygiene kits, games, and gift cards. Social workers identify students, preschool to high school, in need of holiday assistance.



## DISCOVER SHOP-A-THON: Pillar Support Event

**KOHL'S**  
**DISCOVER**

The DISCOVER and Kohl's Shop-a-Thon! is a Back-to-School shopping spree for over 400 students. With over 200 volunteers and partners, DISCOVER ensures students receive dental care, vision care, hair cuts and breakfast. Volunteers escort students through Kohl's with a \$250 gift card, assisting them in purchasing clothing and supplies for the school year.

Kohl's Cash from the event helped in providing social worker thank you gifts, prizes for our Teacher Appreciation Fair, along with bedding and clothing for Students.





# 2022-2023 GRANITE SCHOOL DISTRICT FACTS

**87 SCHOOLS**

Elementary.....60  
Junior High.....15  
Senior High.....8  
Specialty.....4

**59,716 STUDENTS ENROLLED**

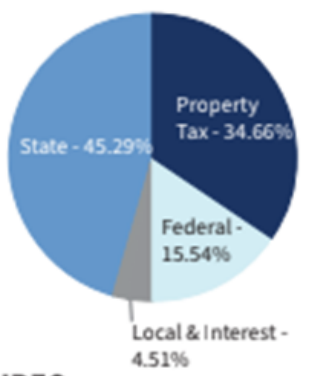
Elementary.....26,599  
Junior High.....12,039  
Senior High.....20,111  
Special Programs.....970

**46.6% OF STUDENTS ARE ECONOMICALLY DISADVANTAGED**

Utah Total.....31%

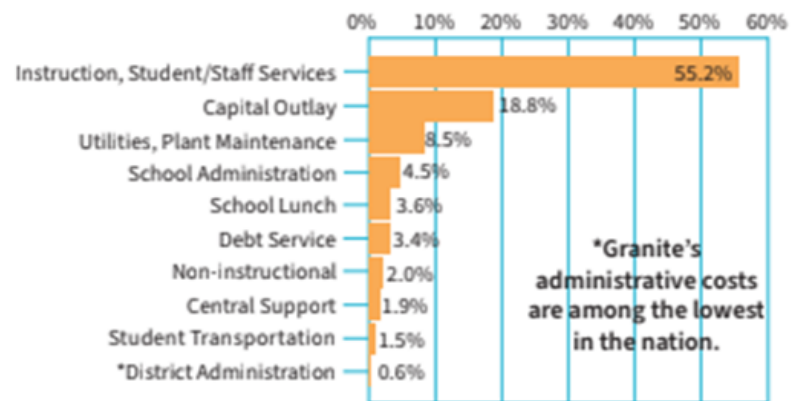
## SPENDING SUMMARY      REVENUE SOURCES

|                               |                 |               |                  |
|-------------------------------|-----------------|---------------|------------------|
| Average per pupil expenditure | Nation \$14,000 | Utah \$9,147  | Granite \$10,276 |
| *Average teacher salary       | Nation \$66,397 | Utah \$59,670 | Granite \$65,119 |
| **Student-teacher ratio       | Nation 15.9     | Utah 21.1     | Granite 20.4     |



\*A larger pool of veteran teachers increases averages.  
\*\*Actual class ratios are dependent on a number of factors.

## BUDGETED EXPENDITURES



Data sources:  
Utah State Board of Education, U.S. Department of Education, National Center for Education Statistics

## ASSESSMENTS

**American College Testing (ACT)**  
Composite scores from 2022

Granite.....18.6  
Utah.....19.9  
Nation\*.....19.8

\*All Utah high school students take the ACT, as opposed to roughly 57% nationally. Of states that test all students, Utah has the highest average composite score.

**Advanced Placement (AP)**  
4,867 Exams were taken in GSD  
Percent of exams passed:

Granite.....63.0%  
Utah.....67.8%  
Nation.....60.2%

**State Exams**  
**Readiness Improvement Success Empowerment (RISE)**  
Proficient or Highly Proficient (Grades 3-8)

English Language Arts.....33.1%  
Mathematics.....30.8%  
Science (Grades 4-8).....37.4%

**Utah Aspire Plus**  
Proficient or Highly Proficient (Grades 9-10)

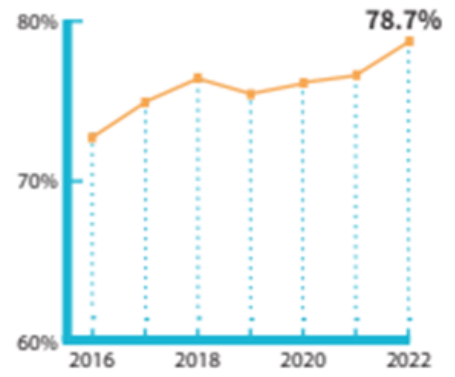
English Language Arts.....30.2%  
Mathematics.....19.8%  
Science.....23.5%

## ETHNIC MAKEUP

|                       |       |
|-----------------------|-------|
| American Indian.....  | 1.3%  |
| Asian.....            | 4.6%  |
| Black.....            | 4.3%  |
| Hispanic/Latino.....  | 35.0% |
| Pacific Islander..... | 4.5%  |
| White/Caucasian.....  | 49.4% |
| Multiple Races.....   | 1.2%  |

25% of students are English language learners

## GRADUATION RATE



## TEACHERS & STAFF

|                                     |       |
|-------------------------------------|-------|
| Teachers.....                       | 2,903 |
| -Elementary.....                    | 1,422 |
| -Junior High.....                   | 536   |
| -Senior High.....                   | 857   |
| -Special Programs.....              | 88    |
| Specialists/Counselors.....         | 320   |
| Paraeducators/School Support.....   | 1,688 |
| Psychologists/Social Workers.....   | 129   |
| Service Workers/Skilled Crafts..... | 1,213 |
| Preschool.....                      | 204   |
| Substitutes.....                    | 906   |

# MISSION & BOARD OF DIRECTORS

Governed by a volunteer board of directors, these individuals give of their time in assuring that the organization fulfills its mission.

## MISSION

Granite Education Foundation reduces barriers to learning while increasing access to opportunities for students in the Granite School District.

## BOARD OF DIRECTORS

**Carrie Johnson — Board Chair**  
CompHealth— Senior Vice President  
People & Culture

**Anthony Bennett**  
Vital Staffing, Owner  
Business Development

**David James**  
KUTV 2 News — Sports Anchor

**Garrett Laws**  
Granite Credit Union —  
Marketing Director

**Katharine Newton**  
Education Advocate

**Mark Norton**  
Pepsi Co. — Sr. Key Account Manager

**Randy Woodbury**  
Woodbury Corporation — President

**Richard Madsen II**  
Ray Quinney & Nebeker P.C. —  
Attorney, Shareholder



**Robynn Eccles**  
Eccles Group — Founder & Realtor

**Sean Marchant**  
US Novelty — Sales Manager

**Steven Raguskus**  
Proesis Biologics Inc. - Director of Operations

**Terri Heyduk**  
St. James Episcopal Church — Retired

**Tina West**  
Granite School District — School  
Accountability Director

# FINANCIALS

## Fiscal Year Ending June 30

|  | WITHOUT DONOR<br>RESTRICTIONS | WITH DONOR<br>RESTRICTIONS | TOTAL              |
|--|-------------------------------|----------------------------|--------------------|
| <b>REVENUE SUPPORT &amp; GAINS</b>   |                               |                            |                    |
| Contributions  | \$1,053,147                   | 0                          | \$1,053,147        |
| Fundraising Revenue  | \$191,425                     | 0                          | \$191,425          |
| Donated Services   | \$633,398                     | 0                          | \$633,398          |
| Donated In-Kind Contributions  | \$1,066,425                   | 0                          | \$1,066,425        |
| Net Investment Income  | -\$394,374                    | 0                          | -\$394,374         |
| <b>Total Revenue Support &amp; Gains</b>   | <b>\$2,550,021</b>            | <b>0</b>                   | <b>\$2,550,021</b> |
| Net Assets released from restrictions - other                                    | \$69,092                      | -\$69,092                  | \$0                |
| <b>Total Revenue, Support, Gains &amp; Net Assets Released from Restrictions</b> | <b>\$2,619,113</b>            | <b>-\$69,092</b>           | <b>\$2,550,021</b> |

## PROGRAM SERVICES & EXPENSES

|  |                    |                  |                    |
|--|--------------------|------------------|--------------------|
| Program Services                             | \$2,783,605        | 0                | \$2,783,605        |
| <b>Supporting Services Expense</b>           |                    |                  |                    |
| Management & General                         | \$282,825          | 0                | \$282,825          |
| Development/Fundraising                      | \$165,520          | 0                | \$165,520          |
| <b>Total Supporting Services Expense</b>     | <b>\$448,345</b>   | <b>0</b>         | <b>\$448,345</b>   |
| <b>Total Program Services &amp; Expenses</b> | <b>\$3,231,950</b> | <b>0</b>         | <b>\$3,231,950</b> |
| <b>Change in Net Assets</b>                  | <b>-\$612,837</b>  | <b>-\$69,092</b> | <b>-\$681,929</b>  |
| <b>Net Assets, Beginning of Year</b>         | <b>\$2,366,715</b> | <b>\$797,591</b> | <b>\$3,164,306</b> |
| <b>Net Assets, End of Year</b>               | <b>\$1,753,878</b> | <b>\$728,499</b> | <b>\$2,482,377</b> |

DONOR SPOTLIGHTS:

# THANK YOU FOR MAKING A DIFFERENCE!





## GRANITE EDUCATION FOUNDATION



2500 South State St. D— 108  
Salt Lake City, UT 84115  
385.646.KIDS [5437]

To make a donation  
or volunteer visit  
**[granitekids.org](http://granitekids.org)**